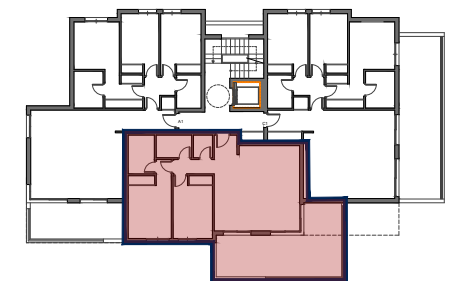
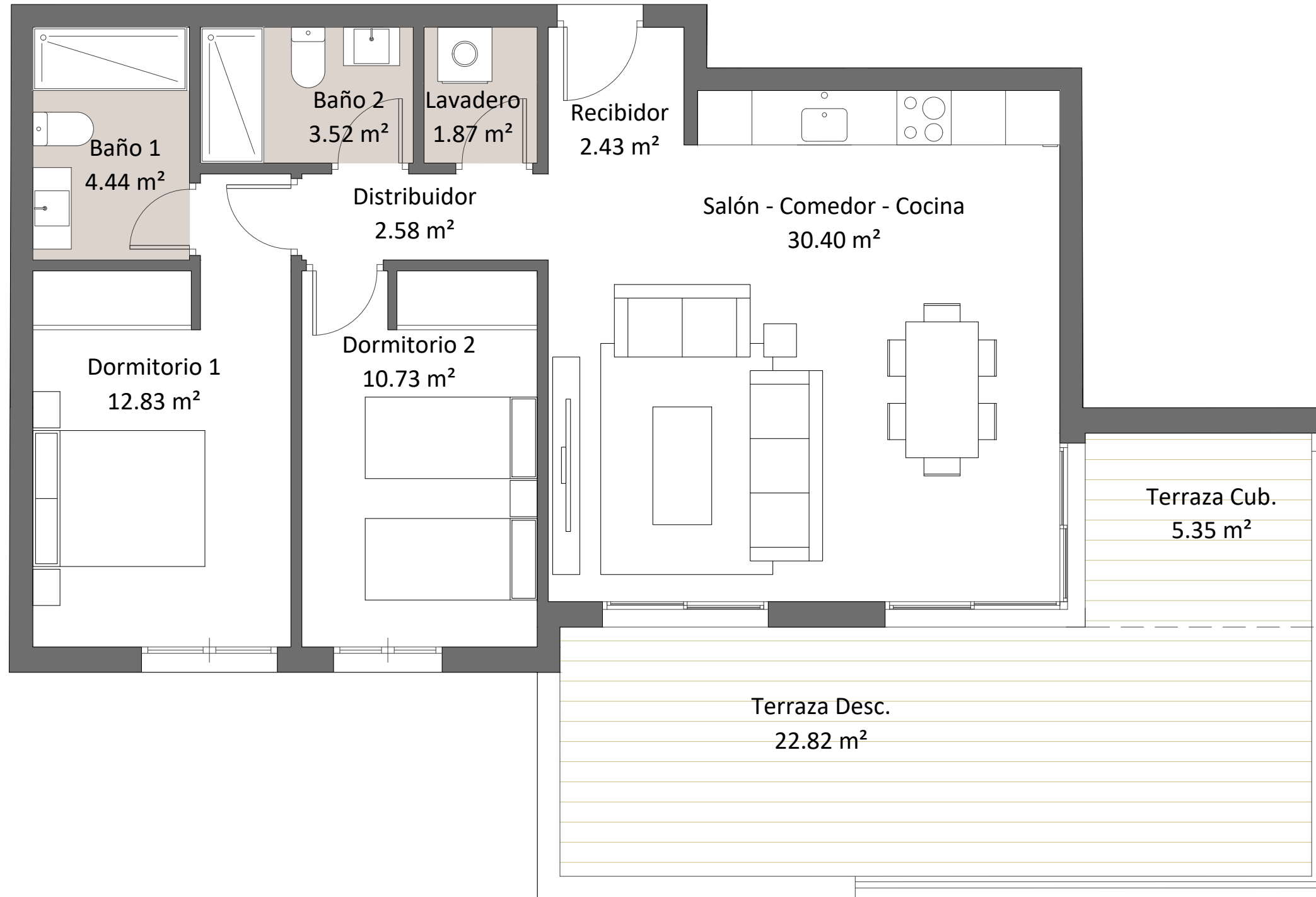


Vivienda B1 2 Dorm.



8 VIVIENDAS EN PARCELA 17
PLANTA PRIMERA

SUP. ÚTIL VIVIENDA	68,80 m ²
SUP. CONSTRUIDA VIVIENDA	79,00 m ²
SUP. CONSTRUIDA TERRAZA	32,16 m ²



AGOSTO 2024

