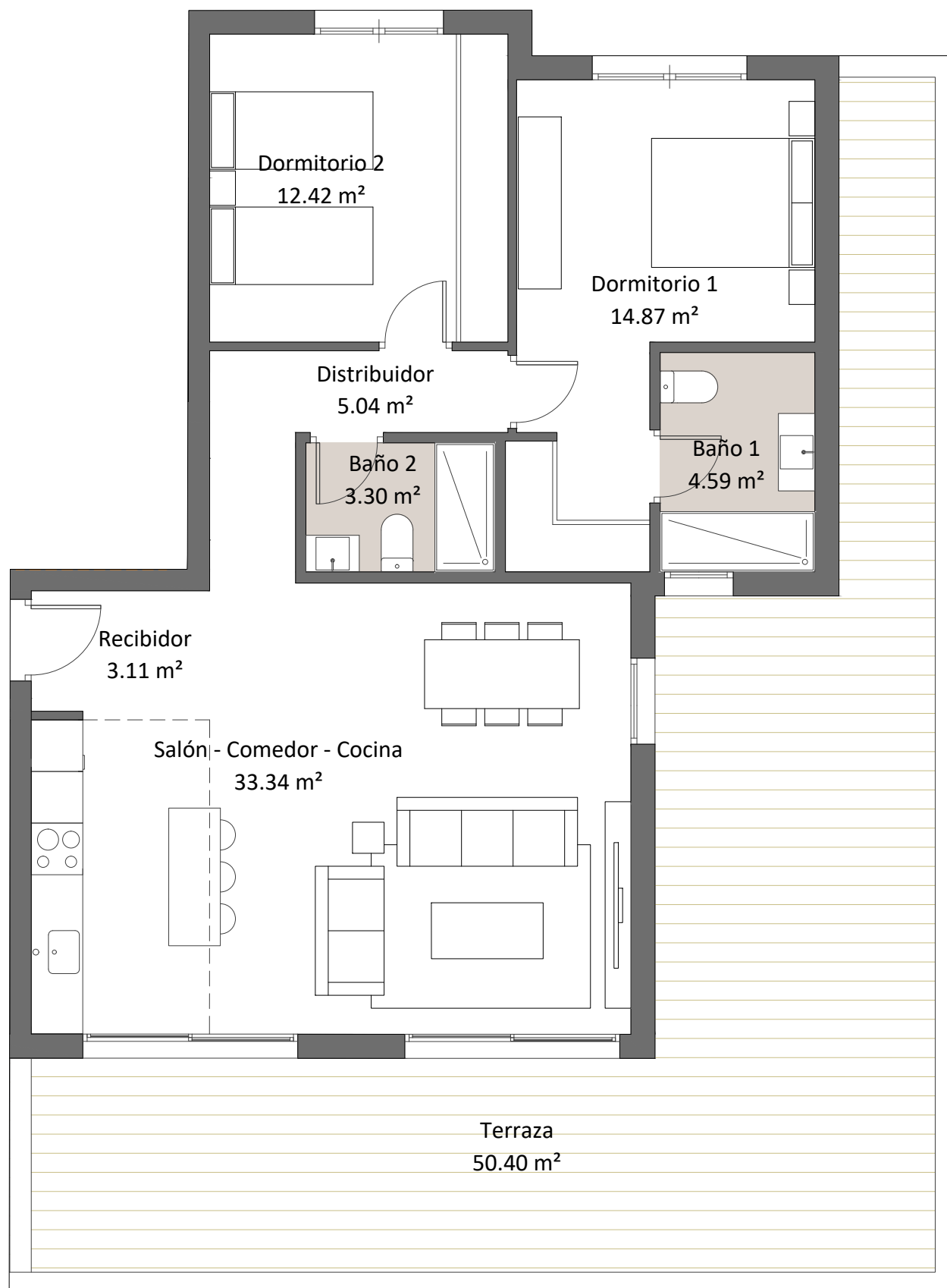


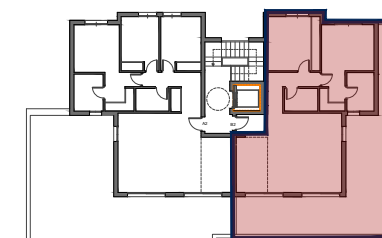
Vivienda B2 2 Dorm.



8 VIVIENDAS EN PARCELA 17

PLANTA ÁTICO

SUP. ÚTIL VIVIENDA	76,67 m ²
SUP. CONSTRUIDA VIVIENDA	89,35 m ²
SUP. CONSTRUIDA TERRAZA	57,26 m ²



AGOSTO 2024

